

Now with New & Improved Sensor!

Model HC8000

Electronic Sump Pump Switch

Patents Pending

HydroCheck[®]
Controlling Water.
Preventing Damage.

STAK[™]
enterprises, inc.
471-A Jennings Drive Lake in the Hills IL 60156

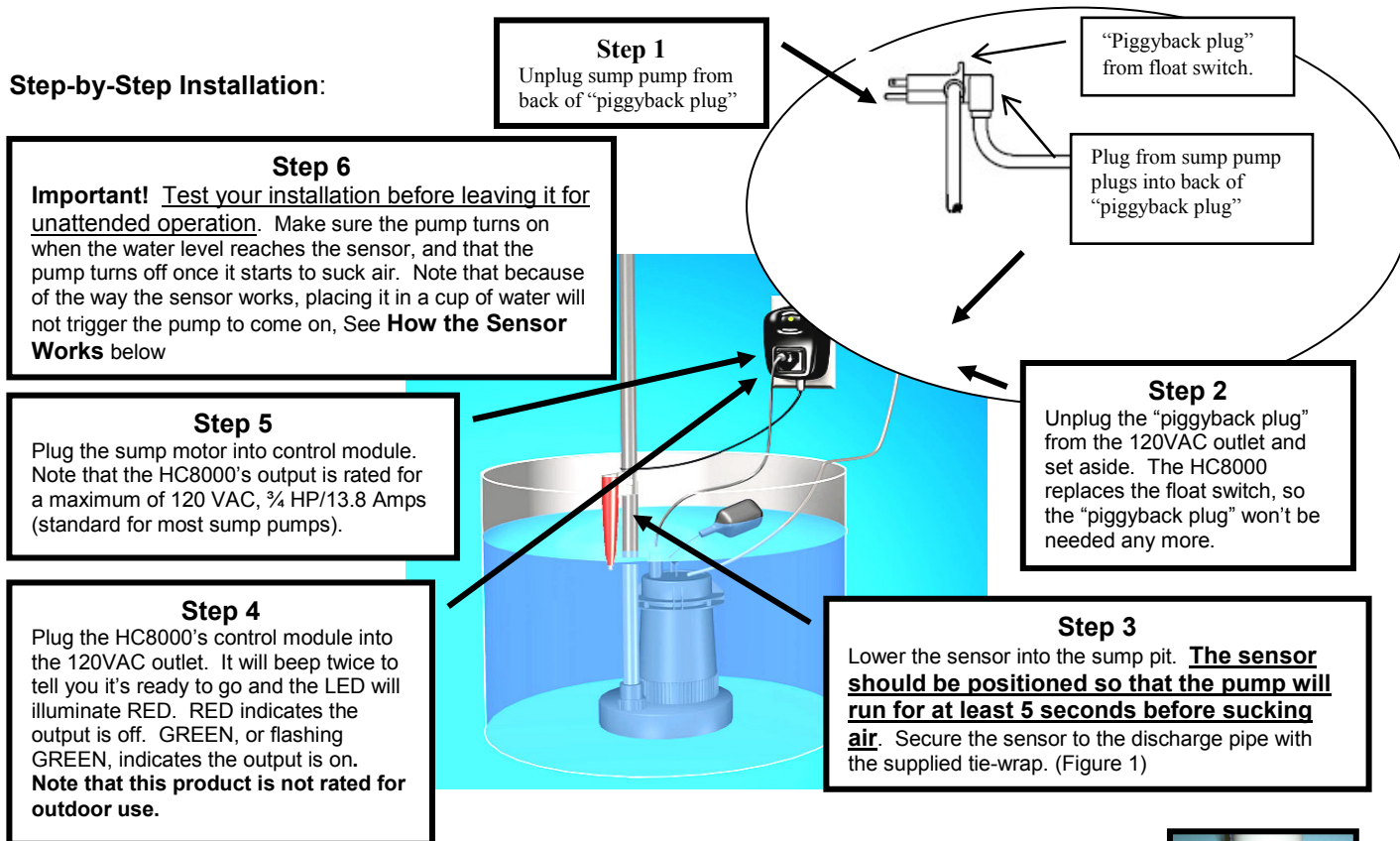
Installation Instructions

Overview

The installation of the HC8000 Sump Pump Switch is simple and straightforward, but there are **THREE VERY IMPORTANT** things to remember for HC8000 to give you years of trouble free, worry free, service:

1. The "piggyback plug" attached to the mechanical float switch **cannot be used with the HC8000**. It must be disconnected and remain disconnected. Just let it lay on the floor after the HC8000 is installed.
2. If your sump pump has internal float switch wiring, i.e. doesn't have a "piggyback plug," then you **MUST** secure the float up as if the pit were full so that the internal switch is always closed and the pump enabled.
3. *The HC8000 turns the pump off when detects the loss of suction by the pump. In order to do this reliably, the sensor should be set at a level to insure that **the pump runs for at least 5 seconds before it starts to suck air!***

Step-by-Step Installation:



How the Sensor Works:

The sensor detects the presence of water by using a continuity circuit, which, when the tip of the sensor is in water, allows a small voltage to flow from the sensor, through the water, to ground. When no water is present, the circuit is broken and no voltage flows. Normally, the pump provides the ground needed for the continuity circuit, but occasionally it won't. When this happens, it is necessary to provide a ground for the sensor to work. This can be done with a length of wire (14 AWG) having a couple of inches of insulation stripped off at both ends. Secure one end of the wire around a water pipe or electrical conduit. Place the other end into the pit far enough down so that the end of the wire is below the sensor. **Note that placing the sensor in a cup of water will not trigger the pump to come on because there is no ground reference to complete the continuity circuit.**



Figure 1

Questions or Comments Contact Us At:

www.hydrocheckproducts.com or info@hydrocheckproducts.com or 877-225-2124

HC8000 Sump Pump Switch Troubleshooting Chart

The Model HC8000 Sump Pump Switch has a number of built in alarms that warn of problems with the pump or discharge plumbing. The available alarms are described in the table below.

Alarm/Indicator/Problem	Description	Possible Causes
2 Beeps	Can't turn pump on	<ol style="list-style-type: none"> 1. Pump not plugged in 2. Float piggy-back plug not disconnected 3. Float switch not secured in "on" position (internally wired float switch)
3 Beeps	High Level Alarm	<ol style="list-style-type: none"> 1. Pump can't keep up with water coming in 2. Discharge plumbing blocked 3. Debris on sensor
Steady Slow Beep*	Motor current above normal	<ol style="list-style-type: none"> 1. Pump motor beginning to fail. Replace pump and/or perform Master Reset as described below.
Steady Fast Beep*	Motor current too high	<ol style="list-style-type: none"> 1. Pump motor failure imminent. Replace pump and/or perform Master Reset as described below.
Steady Red LED	Pump off, no water detected	
Flashing Red LED	Pump off, no water detected, controller in short cycle mode	<ol style="list-style-type: none"> 1. If, during a calibration cycle, the controller does not detect the drop in motor current indicating an empty pit, it defaults to a 6 second cycle time to protect the pump motor from being run dry
Steady Green LED	Pump on, water detected by sensor	
Slow Flashing Green LED	Pump on, water below sensor, timed cycle	
Pump doesn't turn on	Sensor in water but pump doesn't start. LED is steady Red and switch isn't beeping	<ol style="list-style-type: none"> 1. Sensor isn't getting good ground from pump. Install ground wire as described in "How Sensor Works" on front of sheet
Pump turns off too soon	Pump starts okay, but shuts off before it starts to suck air	<ol style="list-style-type: none"> 1. Problem with pump's discharge path. Try to reduce resistance by decreasing number of bends, shortening discharge distance, etc.

*The HC8000 needs to be Master Reset after replacing the pump by performing the following steps:

1. Unplug the pump from the HC8000
2. Unplug the HC8000 from the 120 VAC outlet
3. Wait 5 seconds then plug the HC8000 back into the 120 VAC outlet
4. Wait for the HC8000 to finish its startup checks (about 5 seconds) then plug the pump back in.

Model HC8000 Sump Pump Switch Limited Lifetime Warranty

STAK Enterprises Inc. warrants the **Model HC8000 Sump Pump Switch** to be free from defects in materials and workmanship for its normal, useful life, from the date of purchase. STAK Enterprises Inc. makes no other express warranty for this device. No agent, representative, dealer, or employee of STAK Enterprises Inc. has the authority to increase or alter the obligations or limitations of the warranty. The company's obligation of this warranty shall be limited to the repair or replacement of any part of the HC8000 which is found to be defective in materials or workmanship under normal use and service during the duration of product use by original product owner commencing with the date of purchase. Owner must pay all shipping charges necessary to replace product covered by this warranty. This warranty shall not apply to acts of God, nor shall it apply to products which, in the sole judgment of STAK Enterprises, Inc. have been subject to negligence, abuse, accident, tampering, alteration, misapplication, or improper installation. Units in need of repair should be returned, shipping prepaid, to

Customer Service Department
 STAK Enterprises, Inc.
 471-A Jennings Drive
 Lake in the Hills, IL 60156

THE DURATION OF ANY EXPRESS OR IMPLIED WARRANTY, INCLUDING THAT OF MERCHANTABILITY OR FITNESS FOR ANY PARTICULAR PURPOSES, SHALL BE LIMITED TO THE NORMAL, USEFUL LIFE OF THE PRODUCT, COMMENCING WITH THE DATE OF PURCHASE. IN NO CASE SHALL THE COMPANY BE LIABLE FOR ANY CONSEQUENTIAL OR INCIDENTAL DAMAGES FOR BREACH OF THIS OR ANY OTHER WARRANTY, EXPRESS OR IMPLIED, WHATSOEVER.

Some states do not allow the exclusion or limitation of incidental or consequential damages, so the above limitation or exclusion may not apply to you. This warranty gives you specific legal rights and you may also have other rights that vary from state to state.



DO NOT RETURN TO STORE!
CALL 1-877-225-2124
 If you have installation questions or other product questions, contact us toll-free at 1-877-225-2124

Questions or Comments Contact Us At:

www.hydrocheckproducts.com or info@hydrocheckproducts.com or 877-225-2124